

**BALL VALVES
2 WAY**

EB..

These 2 way Ball Valves are suitable for use in heating and air conditioning applications to control the flow of chilled water, hot water and up to 30% glycol in closed circuit systems.
In open circuits ie mains water or cooling, mineral deposits will impair the operation.



EB..2A to 2H - Body = Brass
Ball : Brass Nickel Plated
Valve Stem Gasket : Rubber EPDM
Flanged valves to PN16
Full Bore Passage
The motor Part Number must be clearly specified to match each valve ordered.
Supplied complete with mounting bracket for the motor.
Select motor type E08..E16..E24..E32.. from separate data sheet.

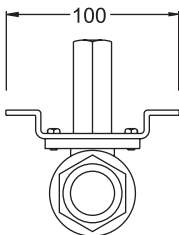
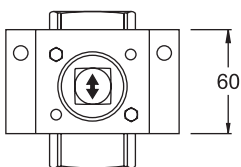
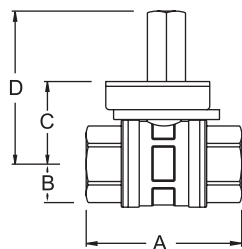
EB..FL -Body = Bronze
Ball Gasket : PTFE
Rotary travel 90°
Tight Shut-off

Type	Size	Kvs m³/h	Max Diff Pressure Bar	Max Pressure Bar	Media Temp °C	Select Motor
EB15-2A	15mm ½" BSP Female	16.2	6	16	2 - 110	E08.. ER08..
EB20-2B	20mm ¾" BSP Female	26.5	6	16	2 - 110	E08.. ER08..
EB25-2C	25mm 1" BSP Female	47	6	16	2 - 110	E08.. ER08..
EB32-2D	32mm 1¼" BSP Female	70	6	16	2 - 110	E16.. ER20..
EB40-2E	40mm 1½" BSP Female	145	6	16	2 - 110	E16.. ER20..
EB50-2F	50mm 2" BSP Female	191	6	16	2 - 110	E16.. ER20..
EB65-2G	65mm 2½" BSP Female	340	6	16	2 - 110	E24.. ER20..

DIMENSIONS

EB..2A..2H

	A	B	C	D
EB15-2A	73	17	31	80
EB20-2B	84	21.5	35.5	84.5
EB25-2C	95	26	40	167
EB32-2D	107	30.5	46.5	107
EB40-2E	119	38.5	58	178
EB50-2F	138	47.5	97.5	142.5
EB65-2G	164	60	93	133
EB80-2H	176	67	100	140

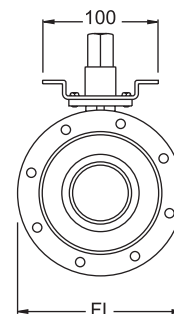
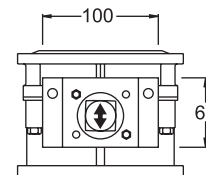
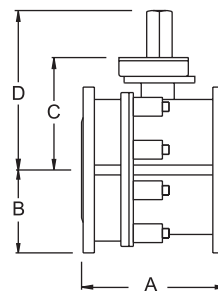


Install the valve with the spindle at any angle vertical to 30° above horizontal.

EB.. FL

	A	B	C	D	FL
EB50-2FFL	150	82.5	112.5	152.5	165
EB65-2GFL	170	90.25	120.5	160.5	185
EB80-2HFL	180	100	130	170	200
EB100-2LFL	190	110	140	180	220

↕ Arrow in line with ports = Valve Open



ACCESSORIES: **EE-7EB** Linkage Kit with ER-08.. spring return actuator 15 - 32mm
EE-8EB Linkage Kit with ER-20.. spring return actuator 40 - 100mm

FLOW CHARTS:

EB..2A..2H

